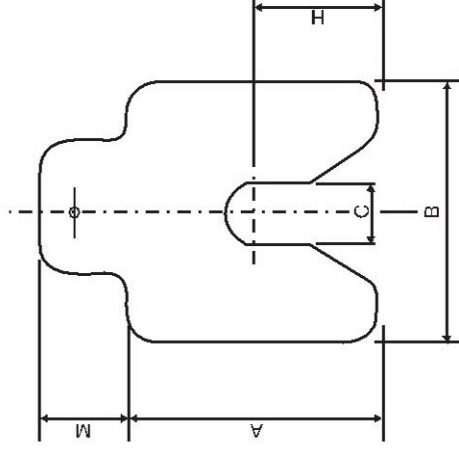


DIMENSIONES / DIMENSIONS

| TIPO/TYPE | A | X | B | C | H | M | GROSOR ÉPAISSEUR THICKNESS |
|-----------|-----|---|-----|----|------|----|---|
| RS 1 | 40 | X | 40 | 13 | 20 | 16 | 0,05, 0,10, 0,20, 0,40, 0,50, 0,70, 1,0, 2,0, 3,0 |
| RS 2 | 50 | X | 50 | 17 | 25 | 18 | |
| RS 3 | 75 | X | 75 | 21 | 37,5 | 18 | |
| RS 4 | 100 | X | 100 | 27 | 50 | 25 | |
| RS 5 | 125 | X | 125 | 45 | 62,5 | 30 | |
| RS 6 | 200 | X | 200 | 55 | 100 | 30 | |


PRECIO

| Ref. | Espesor / Épaisseur / Thickness (Pack 10 uts) | | | | | | | | | |
|-----------------------|---|-----------|-----------|-----------|-----------|-----------|-----------|-----------|-----------|-----------|
| | 0.05 mm | 0.1 mm | 0.2 mm | 0.4 mm | 0.5 mm | 0.7 mm | 1 mm | 2 mm | 3 mm | |
| RS 1 (40 x 40 x 13) | Consultar | Consultar | Consultar | Consultar | Consultar | Consultar | Consultar | Consultar | Consultar | Consultar |
| RS 2 (50 x 50 x 17) | Consultar | Consultar | Consultar | Consultar | Consultar | Consultar | Consultar | Consultar | Consultar | Consultar |
| RS 3 (75 x 75 x 21) | Consultar | Consultar | Consultar | Consultar | Consultar | Consultar | Consultar | Consultar | Consultar | Consultar |
| RS 4 (100 x 100 x 27) | Consultar | Consultar | Consultar | Consultar | Consultar | Consultar | Consultar | Consultar | Consultar | Consultar |
| RS 5 (125 x 125 x 45) | Consultar | Consultar | Consultar | Consultar | Consultar | Consultar | Consultar | Consultar | Consultar | Consultar |
| RS 6 (200 x 200 x 55) | Consultar | Consultar | Consultar | Consultar | Consultar | Consultar | Consultar | Consultar | Consultar | Consultar |

PRECIO MALETIN

| Ref. | Unidades por Maletín | EUR |
|-------|---|-----------|
| RSC-1 | 20 uds. De cada espesor entre 0.05 y 1mm + 10 unidades de 2mm | Consultar |
| RSC-2 | 20 uds. De cada espesor entre 0.05 y 1mm + 10 unidades de 2mm | Consultar |
| RSC-3 | 20 uds. De cada espesor entre 0.05 y 1mm + 10 unidades de 2mm | Consultar |
| RSC-4 | 20 uds. De cada espesor entre 0.05 y 1mm + 10 unidades de 2mm | Consultar |
| RSC-5 | 10 uds. De cada espesor entre 0.05 y 2mm | Consultar |
| RSC-6 | 10 uds. De cada espesor entre 0.05 y 2mm | Consultar |